

# **Contents**

<b>SAFETY AND MAINTENANCE .....</b>	<b>1</b>
Safety Instructions .....	1
Data Security .....	2
Repair .....	2
Operating Environment.....	2
Ambient temperature .....	2
Electromagnetic Compatibility.....	3
Connection .....	3
Battery Operation .....	4
Maintenance .....	4
Care of the Display .....	5
Transport .....	5
Notes on these Operating Instructions .....	6
Audience .....	6
Quality .....	6
Service.....	6
Supplied Items.....	7
<b>GETTING STARTED .....</b>	<b>9</b>
Views .....	10
Front Components .....	10
Back Components .....	11
Bottom Components.....	12
Left Components .....	13
Top Components .....	14
USB-Docking Station.....	15
Initial Set-up of the Pocket PC.....	16
Step 1: Switch On Power Supply .....	16
Step 3: Installing the Software .....	20
Step 4: Connecting to the computer .....	23
Step 5: Using the Pocket PC .....	23
Working with Memory Cards.....	25
Inserting Memory Cards.....	25
Removing Memory Cards .....	25
Accessing Memory Cards .....	26
Data exchange via card reader .....	26
Resetting the Pocket PC.....	27
Soft-Reset .....	27
Hard-Reset .....	27

<b>NAVIGATION .....</b>	<b>29</b>
Safety Instructions for Navigation .....	29
Tips for Navigation .....	29
Notes for Use in a Vehicle .....	30
Additional Notes for Use on a Bicycle or a Motorcycle .....	30
GPS (Global Positioning System) .....	31
Contents of the Navigation CD .....	32
Memory Card Quick Installation .....	32
Software Installation on your PC .....	34
Mounting the Navigation Set on a Bicycle .....	35
Mounting the Navigation Set in a Car .....	36
Installation of the Holder of the Pocket PC .....	36
Aerial Orientation .....	37
Connecting Pocket PC in the car .....	38
Starting Navigation .....	38
<b>FAQ .....</b>	<b>39</b>
<b>CUSTOMER SERVICE .....</b>	<b>41</b>
First-Aid in the Event of Malfunction .....	41
Check Connections and Cables .....	41
Faults and Possible Causes .....	42
Additional Support .....	44
Warranty .....	45
Liability limitations .....	46
Copying this manual .....	46
End User License Agreement for Microsoft® Software (EULA) .....	47
<b>INDEX .....</b>	<b>51</b>

# SAFETY AND MAINTENANCE

---

## SAFETY INSTRUCTIONS

Please read this section carefully and follow all the instructions given. This will help ensure reliable operation and extend the service life for your Pocket PC.

Keep the packaging and the user instructions for future reference or inquiries at a later date. If you pass the article on to another person, you must pass on these instructions.

- Never allow children to play with electrical equipment unsupervised. Children may not always correctly recognize possible danger.
- Never open up the housing of the Pocket PC or the power adapter. These contain no user-serviceable parts. If the housing is opened there is a danger to life from electric shock.
- Do not place any objects on the Pocket PC and do not exert any pressure on the display. Otherwise there is a danger that the screen will break.
- To avoid damage, do not touch the screen with sharp objects. Use only the stylus provided.
- There is a risk of injury if the display breaks. If this should occur, use protective gloves to pack the broken parts and contact customer support to arrange for disposal. Then wash your hands with soap, since there is a possibility that chemicals may have escaped.

Remove the power adapter from the outlet, switch the Pocket PC **off immediately**, or do not actually switch it on, and contact Customer Service...

- ... if the power adapter or the attached plug become scorched or damaged.
- ... if the housing of the Pocket PC, the Power Pack or the charging/synchronizing cradle becomes damaged or fluids leak into it. Components must be checked by Customer Service in order to avoid damage!

## DATA SECURITY

- Every time you update your data make backup copies on an external storage medium. The supplier does not assume liability for data loss or damage to data storage units, and no claims can be accepted for damages resulting from the loss of data or for consequential damages.

## REPAIR

- If you do not have the necessary qualifications, ensure that this is done by a suitably qualified Service Engineer. Please contact our Service Center if you encounter technical problems with your Pocket PC.
- In the event repair becomes necessary, please use only our authorized Service Partners.

## OPERATING ENVIRONMENT

- Keep your Pocket PC and all connected devices away from moisture and avoid dust, heat and direct sunlight, especially in the car.
- Make sure you protect your Pocket PC from getting wet, e.g. from rain and hail, **at all times**. Please **pay attention** that moisture can even build up in a protective pouch because of **condensation**.
- Avoid heavy **vibrations** and **shaking**, such as can arise, for example, in the case of **transverse field intrusions**.
- Avoid the device from releasing itself from its holder, for example when braking. Install the device as vertically as possible.

Failure to follow these instructions may lead to damage to your Pocket PC. The guarantee will be excluded in such cases.

## AMBIENT TEMPERATURE

The Pocket PC is most reliably operated at an ambient temperature of between 41°F and 104°F (5°C and 40°C) and at a relative humidity of between 10% and 90% (non-condensing).

- In the powered down state (power supply: OFF, see page 16) the Pocket PC can be stored at between 32°F and 140°F (0°C and 60°C).
- Store the Pocket PC in a safe location to avoid high temperatures (e.g. when parking or from direct sunlight).

## ELECTROMAGNETIC COMPATIBILITY

- When connecting additional or other components the "Electromagnetic Compatibility Directive" (EMC) must be adhered to. Please also note that only screened cable (maximum 10ft) should be used with this Pocket PC.
- For optimal performance, maintain a distance of at least 10 ft. from sources of high-frequency and magnetic interference (televisions, loudspeaker systems, mobile telephones and so on. This will help avoid malfunctions and loss of data.

## CONNECTION

When connecting your Pocket PC be sure to correctly observe the following instructions:

### POWER SUPPLY

- The outlet must be in the vicinity of the Pocket PC and must be easily accessible.
- Only use the mains adapter on grounded sockets at **100–240 V~ AC, 50/60 Hz**. If you are unsure about the power supply to the place of use, ask the relevant energy supplier.
- Use only the power adapter provided with your Pocket PC.
- For additional safety, we recommend the use of a surge protector in order to protect your Pocket PC from damage from spikes or lightning strikes on the power network.

### POWER THROUGH CAR ADAPTER


- The car adapter should only be connected to the lighter socket of a car (car battery = DC 12V<sub>DC</sub>, no trucks!). If you are in any doubt about the power source in your car, contact your car manufacturer.

### CABLING

- Arrange cables so that no-one can tread on them or trip over them.
- Do not place any items on the cable.

## BATTERY OPERATION

Your Pocket PC is operated with a removable battery. In order to prolong the life and efficiency of your battery and to ensure safe operation, follow the instructions below:

- **Caution!** Danger of explosion if rechargeable batteries are not changed properly. Only replace with the same type of battery or a similar type recommended by the manufacturer. Never open the rechargeable battery. Do not throw the rechargeable battery into fire. Dispose of the used batteries following the manufacturer's instructions.
- Batteries cannot withstand heat. Avoid the Pocket PC and the integrated battery becoming overheated. Failure to comply with this instruction may lead to damage to and even explosion of the battery.
- Use only the original power pack to charge the battery or the car adapter from the optional navigation kit.
-  **The Pocket PC and its batteries are special category waste.** When disposing of the Pocket PC ensure that this is done correctly. Contact Customer Service for more details.

## MAINTENANCE

⦿ **Warning:** There are **no user-serviceable** or cleanable **parts** inside the Pocket PC housing.

You can prolong the life of the Pocket PC by taking the following simple steps:

- Always remove the power plug and all connecting cables before cleaning.
- Clean the Pocket PC only with a damp, lint-free cloth.
- Do not use solvents, caustic or gaseous cleaners.

## CARE OF THE DISPLAY

- Avoid scratching the display surface as this is easily damaged. It is strongly recommended to use a display protection mylar to avoid scratches. Please ask your nearest dealer for this accessory.
- Ensure that no traces of water remain on the screen. Water can cause irreversible discoloration.
- Use only a soft, lint-free cloth to clean the screen.
- Do not expose the screen to either strong sunlight or ultraviolet radiation.

## TRANSPORT

If you wish to transport the Pocket PC follow the instructions below:

- Following transport of the Pocket PC wait until the unit has acclimatized before using it.
- In the case of wide fluctuations in temperature or humidity condensation or moisture may form inside the Pocket PC and this can cause an electrical short-circuit.
- In order to protect the Pocket PC from dirt, knocks and scratching, use either the protective case or the storage pocket with transparent window.
- When shipping your Pocket PC use only the original packaging and advise the carrier accordingly.
- Before traveling ensure that you are aware of the power and communications provision at your destination. Before traveling obtain any power or communications adapters (modem, LAN, etc.) that may be needed.
- When passing through the hand luggage control at airports, it is recommended that you pass the Pocket PC and all magnetic storage media (external hard drives) through the X-ray system (the machine on which you place your bags). Avoid the magnetic detector (the structure through which you yourself pass) or the magnetic wand (the hand device that the security staff use), since this may corrupt your data.

## NOTES ON THESE OPERATING INSTRUCTIONS

When using the application programs and the operating system you can use the extensive help functions that are available at the touch of a button. These help functions are made available when you use the Microsoft Windows® operating system or the respective application program.

- **Note:** You can find detailed instructions on navigation (optional) and how to use the Pocket PC program on the corresponding CD.

For additional help, also use the extensive help functions, which are available at a click of a button (usually F1 on the PC) or by touching the question mark (on the Pocket PC). This help is available while you use the computer or Pocket PC.

Read the section "Frequently Asked Questions" to obtain answers to questions that are often addressed to our customer service.

The purpose of this manual is to help you with installing your Pocket PC using instruction that are easy to understand.

### AUDIENCE

These operating instructions are aimed at first-time and experienced users alike. The bundled product CD contains a comprehensive instruction manual.

### QUALITY

In selecting the components we have aimed for a high level of functionality, simple handling, safety and reliability. A well-balanced hardware and software design allows us to offer you a technologically advanced Pocket PC that will give great satisfaction in both work and leisure use.

### SERVICE

Our individual customer care is there to support you when you have questions or problems. Please get in touch – we look forward to helping you. This manual contains a special section on Customer Service starting on page 41.



## SUPPLIED ITEMS

Please check the integrity and completeness of the supplied items and, in the case this is not complete, forward us any possible claims within 14 days from the purchase date. The purchase package includes:

Pocket PC

USB docking station (charging/synchronization docking station)\*

ActiveSync<sup>®</sup>-cable\* for charging and synchronizing\*

AC adaptor, adaptor plug (for the country in question) as well as a connection plug\* for direct connection of the power supply to the ActiveSync<sup>®</sup>-connection

Microsoft Companion CD

Instruction manual and warranty card

Bicycle fixture \*

Car holder of the Pocket PC with flexible neck\*

Power cable for 12V cigarette lighter\*

CD with navigation software (see page 34)

Earphones\*

Protective case and storage pocket \*

Pre-installed memory card(s) MMC/SD\*

\* optional



# GETTING STARTED

---

This chapter introduces you to the external components of your Pocket PC and guides you through the process of setting up your Pocket PC for use.

The illustrations on the following pages introduce you to the various buttons, connectors, ports and features of your Pocket PC.

# VIEWS

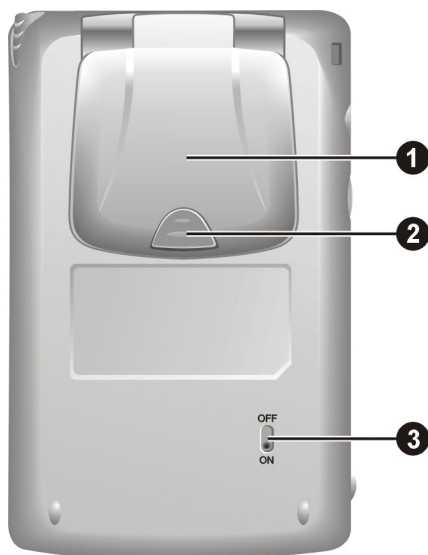
## FRONT COMPONENTS



Ref	Component	Description
❶	<b>Touch Screen</b> (Touch-sensitive screen)	Displays the output of your Pocket PC. Tap the screen with the stylus to select menu commands or enter information.
❷	<b>Program Button</b>	<b>Notes</b>
❸	<b>Microphone</b>	Receives sound and voice to record voice.
❹	<b>Navigationpad</b>	Moves up, down, left or right by pushing the corresponding area of the pad. Press the centre button to confirm your selection.
❺	<b>Loudspeaker</b>	Sends out music, sounds and voice.

Ref Component	Description
<b>⑥ Battery Charge Indicator</b>	Lights orange to indicate that battery charging is in progress and lights green when the battery is fully charged.
<b>⑦ Notification Indicator</b>	Flashes red to inform you of scheduled appointments, alarms and reminders.

## BACK COMPONENTS



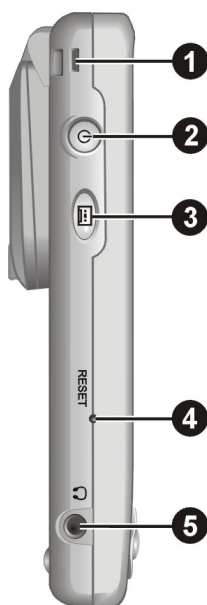
Ref Component	Description
<b>① GPS antenna</b>	Integrated (hinged) GPS antenna
<b>② External aerial connection</b>	Connection for an optional second aerial.
<b>③ Main switch</b>	The Pocket PC is switched on and off completely with this switch. Switching off during operation will lead to the complete loss of data (hard reset).

**BOTTOM COMPONENTS**



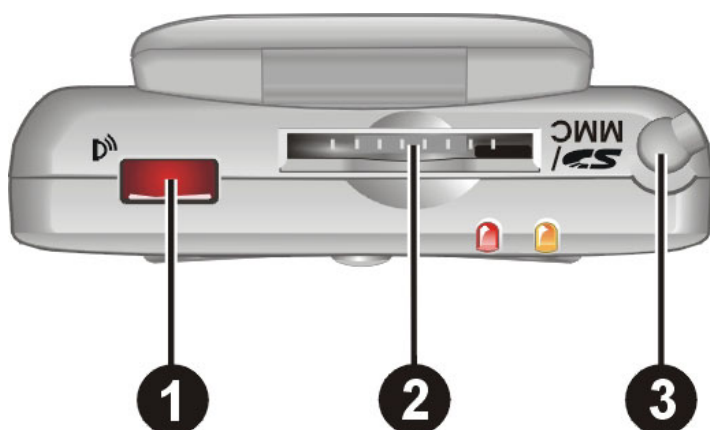
Ref Component	Description
1 <b>ActiveSync® - Connector</b>	Connects to your desktop compute for synchronizing data.

## LEFT COMPONENTS



Ref Component	Description
<b>① Lanyard Eyelet</b>	Lanyard attaches to this opening.
<b>② On/Off Button</b>	Turns your Pocket PC on or off by pressing briefly. Turns the screen backlight on or off by pressing and holding for approx. 3 seconds.
<b>③ Record Button / GPS-Button</b>	The Memo function is started by means of this button. It can be converted to switching the GPS receiver on and off manually by means of 'Setting / System / Medion Utility / GPS.
<b>④ Reset Button</b>	Restarts your Pocket PC. (Soft-Reset), see page 27.
<b>⑤ Headphone</b>	Connects to a pair of stereo headphones (2,5 mm).

## TOP COMPONENTS



Ref	Component	Description
①	IR Port	Beams files to other mobile devices.
②	SD/MMC Slot	Accepts an optional SD (Secure Digital) or MMC (MultiMediaCard) card for removable storage.
③	Stylus	Take the pen out of its compartment in order to use it, and replace it after use. The pointer pen is required for operating the touch screen.



## USB-DOCKING STATION

- **Warning:** The docking station may only be used with the supplied AC adaptor (Phihong PSC05R-050) and this Pocket PC.

The optional USB docking station is a very useful way of charging and synchronizing your Pocket PC with a computer. You can also use the optional ActiveSync® Cable for connecting to the Pocket PC directly without using the docking station.

### ASSEMBLY OF THE USB-DOCKING STATION

Plug the plastic holder onto the docking station carefully. The two noses must click in left and right.

### OVERVIEW OF THE DOCKING STATION:



Ref	Component	Description
①	PPC Connector	Connects to your Pocket PC.
②	Power Connector	Connects to the AC adapter.
③	USB-Cable	For connecting the USB-Docking Station to a USB-port.

## INITIAL SET-UP OF THE POCKET PC

The following guides you step by step through the initial set up of the Pocket PC.

First, remove the protective transport foil from the display and from the infrared interface, if necessary.

### STEP 1: SWITCH ON POWER SUPPLY

Switch the main switch on the back of the Pocket PCs to **ON**.

➤ **Attention:** Always leave the main switch at the **ON** position, unless you would like to carry out a new initial setting. If the switch is moved to **OFF**, you will lose all the data in your Pocket PC and you will have to carry out the initial setting again.

1. The Pocket PC automatically starts the initial set-up. The brand logo appears and a few seconds later the Pocket PC displays the Windows® Mobile 2003 welcome screen.
2. With the stylus give the screen one short touch and follow the instructions that are displayed to you.
3. Select the time zone by tapping on the dateline on the start-up screen and adjust time and date.

➤ **Attention:** It can be necessary to charge the Pocket PC for some time initially before the initial installation can be run through, according to the charging status of the battery installed.



## CHARGE THE BATTERY OF THE POCKET PC

You have various possibilities of charging the battery of the Pocket PC:

- With the assistance of the ActiveSync® Cable
  - Through the docking station
  - With the assistance of the connector
  - Through the car adapter (see P. 38)
- The charging status display **lights orange** until the Pocket PC is charged. Do not interrupt the charging process before the battery is fully charged. This may take a few hours. The Pocket PC is fully charged if the charging display **lights green**.
  - **Note:** You can use the Pocket PC during the charging process, but the power supply must not be interrupted during initial set-up.
  - Leave the mains adapter connected to the Pocket PC for around 24 hours, so that the integrated battery can charge-up fully.
  - You can leave the main adapter connected, and this is very handy for continuous operation. In this way the Pocket PC is always being recharged when it is connected to the synchronisation computer. However, the mains adapter also requires power even when it is not charging up the battery of the Pocket.

## CHARGING WITH THE ACTIVE SYNC<sup>®</sup> CABLE



(similar picture)

Push the adapter plug (4) into the guide on the back of the power adapter. Plug the power adapter (3) into a power outlet that is easy to reach.

Plug the cable of the power adapter (2) into the USB connector on the ActiveSync<sup>®</sup> cable and the ActiveSync connector into the ActiveSync<sup>®</sup> connection of the Pocket PC (1).

Do not connect the ActiveSync<sup>®</sup> cable to your PC before the software is set up initially!

## CHARGING THROUGH THE DOCKING STATION

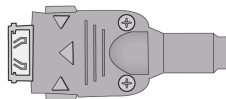
1. Prepare the network adapter as described in the case of the ActiveSync cable and connect the cable of the power adapter to the USB connector.
2. Push the Pocket PC into the USB docking station carefully (see P. 15).



Do not connect the USB cable of the docking station to your PC before setting up the software for the first time!

## CHARGING WITH THE ASSISTANCE OF THE OPTIONAL CONNECTOR

If you are using the connector, plug the connecting cable into the end of the connector and connect them to the ActiveSync® connection together.



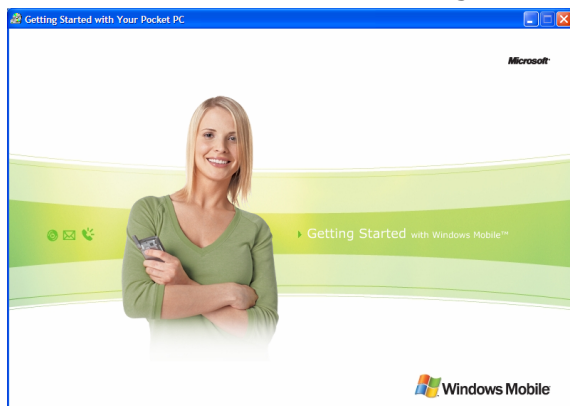
### STEP 3: INSTALLING THE SOFTWARE

- **Warning:** When software is installed, important files may be overwritten and changed. Create a suitable backup of your hard drive so you can access the original files in the event of problems.
- **Windows 2000/XP:** You need to have administrative permissions on your Computer in order to install software.

1. Insert the **Companion CD** supplied and wait for the program to start automatically.

- **Note:** If the program does not start automatically, the **Setup** program on the CD must be started.

2. The following window appears with a short introduction. Wait for a few seconds or click the triangle to skip the intro.



3. Click the **Start here** button and follow the instructions on the screen in order to install the necessary software.

## INSTALLING MICROSOFT® OUTLOOK

For optimum management of your data (e-mails, contacts, dates, etc.) using the Pocket PC, you need the **Microsoft® Outlook** program.

The cost of the Pocket PC includes a license for this program which can be found on the CD. If you already have **Microsoft® 2002** installed on your PC, continue with the next step for installation of **Microsoft® ActiveSync®**. Likewise, if you have **Outlook 98** or **Outlook 2000**, perform this installation:

1. Click **Install Outlook 2002**.

➤ On the right of the window a product description appears with further installation instructions.

2. Now click **Install**.
3. A dialog box appears that informs you that a program now has to be installed. Click **OK**.

You are now asked whether you want to open the file or store it on the PC. Select the **Open** option here and follow the instructions on the screen. You will find the **Product Key** on the CD sleeve. Have your Windows® CD ready as well in case it is needed.

**Microsoft® Outlook 2002** must be activated by telephone or via the Internet. If this is not done, the program will no longer start after the 50th time.

## INSTALLING MICROSOFT® ACTIVESYNC®

In order to synchronize your data (e-mails, contacts, dates, etc.) between your PC and the Pocket PC, you need the **Microsoft® ActiveSync®** program.

The cost of the Pocket PC includes a license for this program which can be found on the CD.

➤ If you do not have **Microsoft® Outlook 2002** on your PC, please install Outlook 2002 following the directions above.

➤ **Attention:** You should **not** connect the Pocket PC to your computer **yet**.

1. Start Windows® and re-insert the CD supplied in order to again display the installation menu you are already familiar with.
2. Click **Install ActiveSync®**.

➤ On the right side of the window you will see more details about the **ActiveSync®** software and additional hints for installation.

3. Click now on **Install**.
4. A dialog box appears that informs you that a program now has to be installed. Click **OK**.
5. You are now asked whether you want to open the file or store it on the PC. Select the **Open** option here and follow the instructions on the screen.
6. If testing the connection options, insert the Pocket PC in the charging/synchronization docking station (see next page).

➤ If other programs have been bundled, you will find these on your Companion CD under: **Enhance Your Experience** ⇒ **Mobility** or **Entertainment**.



## STEP 4: CONNECTING TO THE COMPUTER

1. Start the Pocket PC, by operating the On/Off switch.
2. Ensure that the Pocket PC is inserted in the USB docking station.
3. Plug the USB plug into a free USB slot on your computer.

➤ The **hardware installation assistant** will now detect a new device and install a suitable driver. This may take a few minutes. If unsuccessful the first time, repeat the connection attempt.


4. Follow the instructions on your screen. The program will now set up a partnership between your PC and the Pocket PC. As a result of the synchronisation your data (mail, contacts, appointments, etc.) will be automatically transferred to your Pocket PC.

## STEP 5: USING THE POCKET PC

### OPERATING THE POCKET PC

1. Take the Pocket PC out of the docking station.

In order to execute a function or a program ...

- Use the stylus to tap  and then the desired option.
  - Press the program keys of the Pocket PC in order to start the desired program. The underlying programs can be defined using **Start** ⇒ **Settings** ⇒ **Buttons**.
2. Explanations of the operation and functionality of the programs can be obtained from **Start** ⇒ **Help**.

## SYNCHRONIZATION BETWEEN POCKET PC AND PC

When you insert the Pocket PC in the charging/synchronization docking station, **Microsoft ActiveSync®** is automatically started.

The program checks if the Pocket PC is one with which a partnership has already been established.

If this is the case the changes that have taken place on the PC and on the Pocket PC since the last synchronization are compared and reconciled.

In the Settings menu of the **Microsoft ActiveSync®** program you can define precisely which rules are to be applied during synchronization.

Call up the program Help (by pressing F1) in order to see the effects of the corresponding settings.

If the Pocket PC is not recognized as a partner, restricted guest access is automatically activated that allows, for example, data to be exchanged.

If this should occur even though there is a registered partnership, remove the Pocket PC from the charging/synchronization docking station and switch it off and on again.

Re-insert the Pocket PC in the charging / synchronization docking station in order to restart the identification process. If this still does not work, repeat the process and also restart your PC.

If you have changed the device name in the Pocket PC this may be the cause of this malfunction. Please remember this if you change the name of the Pocket PC under **Start** ⇨ **Settings** .

Change the device name of the Pocket PC if necessary, if it does not correspond with the device name stored by ActiveSync®.

## WORKING WITH MEMORY CARDS

Your Pocket PC supports MMC and SD memory cards.

### INSERTING MEMORY CARDS

1. Carefully take the memory card out of its packing (if included). Take care not to touch or dirty the contacts.
2. Push the memory card carefully into the card bay as shown. The side of the memory card wearing the label must point upwards. The memory card should slightly lock in place.



### REMOVING MEMORY CARDS

- Do not remove the memory card while it is accessed. This could result in loss of data.
1. To remove the card press lightly onto the upper edge until it ejects.
  2. Pull the card out without touching the contacts.
  3. Store the memory card in the packing or in another safe location.
- Memory cards are very fragile. Take care **not to dirty** the contacts and **not to force** the card.

## ACCESSING MEMORY CARDS

Memory cards are normally shown as **Storage Cards** in the **Windows Explorer**.

You can access the memory card like a normal drive and store, rename or delete files.

- The Pocket PC only supports memory cards in the FAT16/32 file format. If you insert a card prepared with a different format (e.g. in cameras, MP3 players), your Pocket PC may not recognize it and will ask you to format it again.

**Warning:** Formatting the memory card irretrievably wipes out all data.

- Likewise you cannot just copy files onto the memory card. In some cases they must be converted by the **Microsoft® ActiveSync®** program.

## DATA EXCHANGE VIA CARD READER

You can transfer or synchronise data via ActiveSync®. This is also the correct method, in particular, if files are to be transferred that must be converted into a Pocket PC-readable format.

However, if you wish to copy large quantities of data (MP3 files, navigation maps) to the memory card, these can also be stored directly to the memory card.

Many computers already have memory card devices. Insert the card in this and copy the data directly to the card.

Because of the direct access significantly faster transfer will be achieved.

# RESETTING THE POCKET PC

There are two options for resetting the Pocket PC.

## SOFT-RESET

This option restarts the Pocket PC, without reinstallation being necessary. A soft-reset is often used in order to reorganize the memory. In doing so all programs that are running are interrupted and the working memory is reinitialized.

Choose this option if your Pocket PC is not responding or working properly.

Perform the soft-reset as follows:

1. If possible save the files that your Pocket PC has just been processing.
2. Press the tip of the stylus into the soft-reset switch opening. After a few seconds the Pocket PC displays the start screen. Your configuration and your saved files will **not** be deleted.

## HARD-RESET

**Warning:** A hard-reset **deletes all data** on your Pocket PC and causes a new initial installation.

It is not necessary to install the software on your synchronisation computer again, however.

Perform the hard-reset as follows:

1. If possible save all the files needed from your Pocket PC. To do this use the programs bundled with the Pocket PC (see online help or the manual on CD).
2. Hold down the On/Off switch and carry out a soft-reset as described above.





## SAFETY INSTRUCTIONS FOR NAVIGATION

The bundled product CD contains a comprehensive instruction manual.

### TIPS FOR NAVIGATION

- **Do not manipulate** the navigation system **while driving** to protect yourself and others from accidents!
- In the event that you do not understand the voice instruction or if you are in any doubt about what to do at the next intersection, then the map or arrow display will provide you with a quick orientation. **Only look** at the display when you are in a **safe driving situation**!
- **Attention:** The road layout and **driving rules** take **precedence** over the instructions of the navigation system. Only follow the instructions when circumstances and driving rules permit it! The navigation system will guide you to your destination even when you have to deviate from your planned route.
- The direction statements of the navigation system given do not release the driver of the vehicle from his or her duty of care or personal responsibility.
- Plan routes before you leave. If you want to plan a new route whilst on the road stop driving.
- In order to receive the GPS signal correctly, metal objects may not hinder reception. Attach the Pocket PC onto the inside of the windscreen or near the windscreen with the sucker. Try out different positions in your vehicle in order to find the best reception.

## NOTES FOR USE IN A VEHICLE

- When installing the car docking station take care, that the position of the docking station does not pose a safety risk while driving or in case of accidents.
- Take care that the cable does not impede any safety components.
- Do not mount the docking station within the operating range of any airbags.
- Check the secure adherence of the suction cup at regular intervals.
- The power plug will **consume power**, even if no device is connected. Remove it when not in use to avoid draining the battery.
- Check all safety equipment in your car after installation.
- The display of your Pocket PC may show "light reflexions". Please take care of not being "blinded" during operation.

## ADDITIONAL NOTES FOR USE ON A BICYCLE OR A MOTORCYCLE

- Pay attention during installation that the ability to steer is not impaired.
- Do not cover any instruments during installation.



## GPS (GLOBAL POSITIONING SYSTEM)

GPS is a satellite-backed system for determining your position. With the help of 24 satellites revolving around the earth, it is possible to determine your position on earth with the accuracy of a few meters. The satellite signals are received by the antenna of the built-in GPS receiver, which must have a "line of sight" to at least 4 of these.

- **Note:** By limited line of sight (e.g. in tunnels, between houses, in woods or also in vehicles with metal-coated windows) it is not possible to determine the position. The satellite reception however automatically picks up again as soon as the obstacle has been passed and there line of sight is reestablished again.

The GPS receiver consumes additional power. This is especially of concern, when running on batteries. To conserve power do not turn on the GPS receiver unnecessarily. Therefore, also shut down the navigation software, if it is not needed, or if satellite reception is not possible over an extended period of time.

However, you can switch the Pocket PC off by means of the On/Off switch during a brief interruption to your journey. A renewed Start will be activated by pressing the same switch. The GPS receiver will also be activated at the same time, if navigation software is still active. It can take a short time for the position to be brought up to date again, according to the situation for reception.

- **Note:** Please pay attention that your Pocket PC has been preset so that it does **not** switch off automatically after a few minutes in the case of GPS reception in battery operation. You can change and extend this presetting under **Start/Settings/System/ Medion Utility/GPS**.
- If the GPS receiver has not been active for more than 4 hours, it must orientate itself again. This process may take a while.

## CONTENTS OF THE NAVIGATION CDS

According to the equipment several discs are delivered with your Pocket PC. Contents of the navigation CDs:

The CD "**MapExport**" contains basic maps as well as the MapExport programme which is required to compose your own maps. It will be installed on your computer.

The CDs with the **pre-exported maps** contain already composed maps which can be copied through the explorer on a memory card. These maps are available as you insert the memory card. In the folder "Quick installation" you will find the file Medion-Navigator.cab. If you copy this file to your Pocket PC memory card and execute it from there, the navigation programme will be installed on your Pocket PC. This file is already installed on the memory card when shipping. There is no need to install it again.

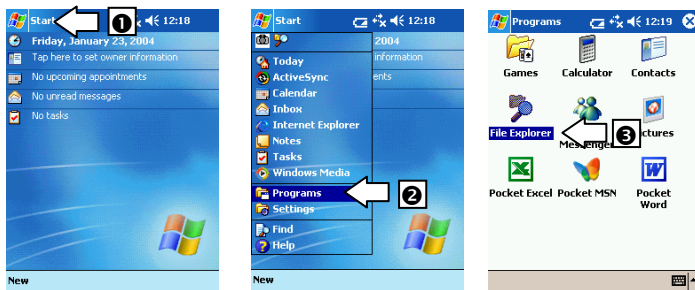
## MEMORY CARD QUICK INSTALLATION

- We recommend that you do execute a **full Initial Installation** (see page 16 and later) in order to be able to access additional functions of the Pocket PC.
- The following installation limits the Navigation to the area which is pre-installed on your memory card.

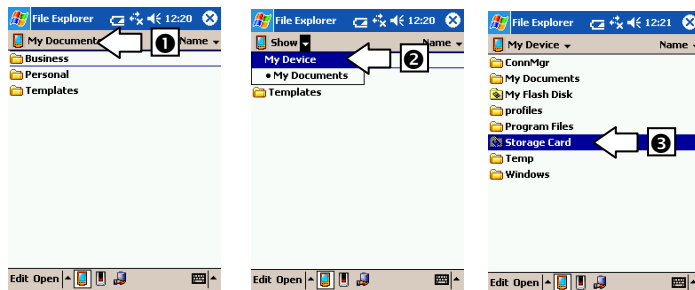
1. Read and adhere to the **safety instructions** on p. 2 and following and p. 23 and following.
2. Install the components of the navigation system in your **car**. Follow the instruction on p. 36.
3. Press the **On/Off** button to start your Pocket PC. If the instructions of **Step 1** (p. 16) have not yet been executed, then do it now. The battery of the Pocket PC is charged through the power circuit of the car.

- Should the memory card not be inserted in the Pocket PC, then insert it into the slot.

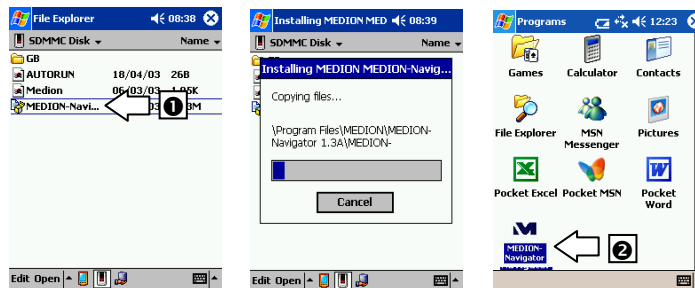
## 1. Start File Explorer :



## 2. Switch to the **memory card**:



## 3. Install the navigation program by clicking onto the program **Medion-Navigator**. Then the symbol will appear in the program folder:



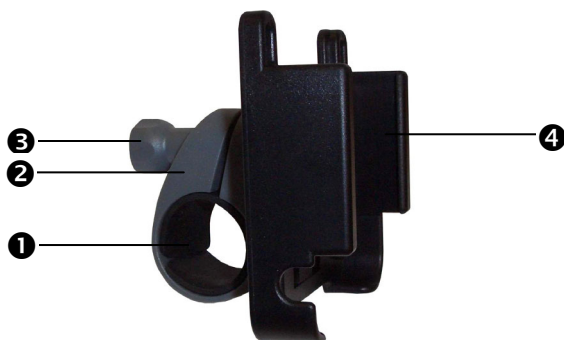
## 4. The navigation software is now installed and can be used as described on page 38.

## SOFTWARE INSTALLATION ON YOUR PC

In order to be able to deploy self-defined cards on your Pocket PC you must install the corresponding navigation software on your PC:

1. Before installing the navigation software ensure, that **ActiveSync®** is installed, that the Pocket PC is placed in the docking station and that a **connection** is established (see page 22).
2. Place the CD-ROM with the navigation software (**MapExport**) in your CD drive. The installation will start automatically.
3. Follow the program instructions.
4. When the installation of the navigation software **Map-Export** on your PC is completed, then the program will attempt to install the software onto your Pocket PC. If you have already performed the installation manually (Memory card quick installation, page 32), cancel this step.

## MOUNTING THE NAVIGATION SET ON A BICYCLE



1. Attach the bicycle support (❷) onto your handlebar, by pulling it up over the handlebar from below and pushing one of the supplied rubber rings (❶) between the bicycle support and the handlebar. The flat site of the support points in your direction. As the material is elastic, you can carefully bend open the support, lay it around the handlebar and push it together again.
2. Position the holder for the Pocket PC (❹) on the bicycle holder (❷) as illustrated above. Push the holder for the Pocket PC downward, until it clicks in audibly. Please note that the support can be inserted in **one direction** only.
3. Fix the complete holding device with the supplied screw (❸) and tighten it firmly by hand. Use the supplied washer depending on the thickness of the handlebar.



4. Now insert the Pocket PC into the holder.

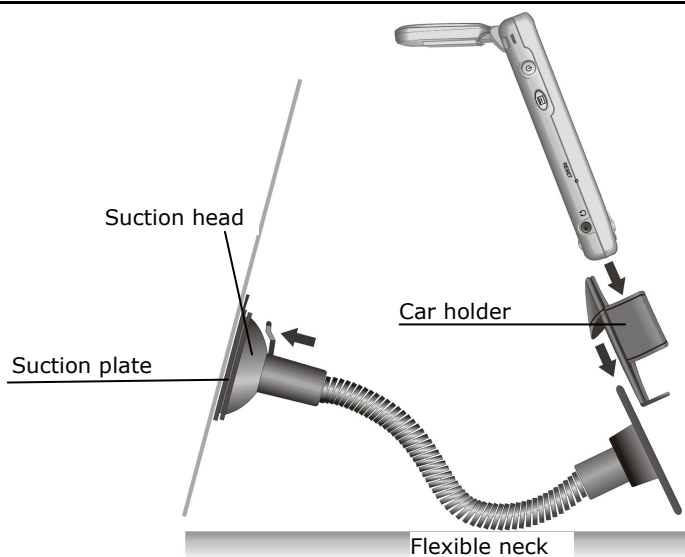
➤ **Note:** After assembly, protect your Pocket PC from dust and dirt using the storage pocket with transparent window. The storage pocket does not protect against rain or moisture. Take care that the Pocket PC does not exposed to moisture. This may damage the electronic parts.

## MOUNTING THE NAVIGATION SET IN A CAR

- **Attention!** Only fix the holder for the pocket PC to the wind-screen, if it does not impede the view. Should this not be possible, then mount the holder with the enclosed suction plate in any way that will allow peril-free and safe operation.

### INSTALLATION OF THE HOLDER OF THE POCKET PC

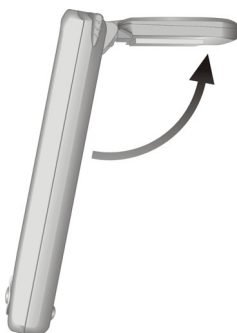
- **Hint:** If you want to fix the holder to the wind screen, then you can skip steps 1 and 2.
1. Remove the protective foil from the sticky side of the suction plate.
  2. Fix the suction plate to a suitable location on the dashboard. Take care, that the surface of the dashboard is clean and press the suction plate strongly onto the surface.
- To obtain a strong and secure hold the suction plate should not be used for 24 hours.



(similar picture)

3. Mount the car holder to the flexible neck. Note the labels on the flexible neck. The arrow labeled **close** must point in the direction of the fixture. The connection closes with a noticeable clicking sound.
4. Place the holder with the suction head onto the suction plate (or directly onto the wind screen) and press the lever on the suction head downwards. The suction head will stick itself firmly to the suction plate.
5. Place the Pocket PC carefully into the car holder and close the two brackets firmly, so that the Pocket PC is held securely.

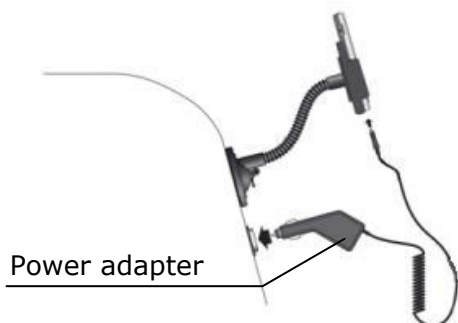
## AERIAL ORIENTATION



The aerial must have unrestricted access to the sky to receive GPS satellite signals. Orient the aerial as horizontally as possible for this reason. Try out aerial and installation possibilities in the vehicle in the case of inadequate reception.

➤ **Attention:** Do not open out the aerial further than 180°.

## CONNECTING POCKET PC IN THE CAR






(similar picture)

1. Plug the jack of the connection cable into the corresponding receptor at the bottom of your Pocket PC (p. 12).
2. Insert the power adapter **now** into the cigarette lighter socket and ensure, that it **will not lose contact** while driving. This could cause a malfunction.

➤ **Hint:** Remove the power adapter from the cigarette lighter socket when ending a trip or when parking the car for a extended period of time. Otherwise the car battery could be drained.


### STARTING NAVIGATION


1. Switch on the Pocket PC with the On/Off button **at the left side** of the device.
2. Start the **Medion-Navigator** program in the program directory of your Pocket PC.
3. As soon as the GPS symbol changes from  to  or  (the number indicates how many satellites are received), the initialization is completed and you can start to drive.

➤ **Hint:** The GPS-receiver will require **some minutes** for initialization when deployed for the first time. Even when GPS signal reception is indicated the navigation could be imprecise. In all future instances it will take about **30-60** seconds until a correct GPS-signal is available.


4. Click on **Enter a destination** to specify your destination. In order to obtain detailed information about how to use the program click on the **Help** button.




 Where can I find more information on the Pocket PC.

 Detailed operating instructions for navigation (optional) and operation of the Pocket PC programs can be found on the corresponding CDs, which accompany your Pocket PC. For additional assistance use the extensive help functions that are available at the touch of a button (usually F1 on your PC) or by typing the question mark (on the Pocket PC). These help options will be made available to you when you use the computer or the Pocket PC.

Useful notes and additional help can be obtained from the Internet at [www.pocketpc.com](http://www.pocketpc.com) or from corresponding forums.

 What do I need the accompanying CDs for?


 The **Companion CD** contains:


- **ActiveSync®** for synchronisation.
- The information management program **Outlook®** and other help programs from Microsoft®.
- Additional programs (optional).
- A comprehensive **User manual** for operating the Pocket PC programs.


Contents of the navigation CDs:


The CD "**MapExport**" contains basic maps as well as the MapExport programme which is required to compose your own maps. It will be installed on your computer.

The CDs with the **pre-exported maps** contain already composed maps which can be copied through the explorer on a memory card. These maps are available as you insert the memory card. In the folder "Quick installation" you will find the file Medion-Navigator.cab. If you copy this file to your Pocket PC memory card and execute it from there, the navigation programme will be installed on your Pocket PC. This file is already installed on the memory card when shipping. There is no need to install it again.


 The Pocket PC is no longer responding. What should I do?

 Carry out a soft-reset (see page 27).


 How can I adjust the lighting?


 1. Manually.

2. On the Pocket PC under **Start** ⇒ **Settings** ⇒ **System**  
⇒ **Backlight**.

 How can I find out information on the configuration of the Pocket PC?

 On the Pocket PC under **Start** ⇒ **Settings** ⇒ **System** .

 What sort of processor must I choose if I want to install software that has been written for various platforms?

 Choose ARM.

# CUSTOMER SERVICE

---

## **FIRST-AID IN THE EVENT OF MALFUNCTION**

### GENERAL GUIDANCE

- The regular running of the Windows® programs “Defrag” and “Scandisk” on the PC can remove sources of error and raise system performance.

## **CHECK CONNECTIONS AND CABLES**

Start with a careful visual check of all cable links. If the LCD's are not working, make sure that the power is reaching the computer and all peripherals.

- Switch off the computer and check all cable links. If the computer is connected to peripherals, check also the plug connections of all cables. Do not arbitrarily swap the cables between various units, even if they appear to be precisely the same. The pin assignments of the cables are likely to be different. Once you have ascertained that the power supply is not at fault and all connections are intact, switch on the computer again.

## FAULTS AND POSSIBLE CAUSES

The Pocket PC does not respond anymore.

- Press the reset button. (see page 27).

The Pocket PC is recognized only as a guest by ActiveSync®.

- See information on page 22.

Elements have inadvertently been overwritten.

- In the Settings menu of the ActiveSync® program you can define precisely which rules are to be applied during synchronization.

Call up the program Help (by pressing F1) in order to see the effects of the corresponding settings.

The Pocket PC shows that insufficient memory is available.

- Terminate any unnecessary programs in order to free-up sufficient memory space again. In addition under **Start** ⇒ **Settings** ⇒ **Memory** ⇒ **Current programs** terminate applications that are no longer needed.


Remove unnecessary files. Check temporary Internet files.

Multimedia files (MP3, AVI, BMP etc.) can be very big. Check if you still need these.

Once I have installed ActiveSync® I get error messages from a maintenance program.




- In the temporary folder created by the system, the program creates the WCESCOMM.LOG file which cannot be deleted. If another program tries to do this a corresponding error message appears. The GPS-receiver cannot be initialised.

The GPS receiver cannot be initialized or found.

If the GPS symbol  remains on the screen of the Pocket PC despite correct installation, then this can be caused by the following:


- The GPS receiver is configured for one of the other connectors and not for COM1 of the Pocket PC.

Solution:



1. Click on **Settings** in the **Main Menu** of the navigator.
2. Select **GPS** from the list in the window **Settings**.
3. Activate **COM1** and observe the GPS symbol in the upper right corner. As soon as this changes from  to  or  (the number indicates how many satellites are received), you have successfully activated the COM1 port.
4. Click on **Save**.

The GPS receiver does not start automatically.

Solution:

Should the GPS symbol  still be shown even after the configuration of the COM1 port, then it could be that the integrated GPS receiver can not be started

1. Close the navigation program.
2. Check the GPS reception settings under **Start – Settings – System – GPS**. It is recommended to use the automatic start when accessing COM1. Restart the navigation program.

The GPS symbol  or  should now be displayed after a short while.

The GPS-receiver is blocked.

Solution:

Set the GPS receiver back to delivery status by clicking under Start/Settings/System/Medion Utility/GPS at the resetting control button. The GPS Receiver will have to adjust itself to the satellite situation again completely as in the case of the initial alignment, following this reinitialization. This can take several minutes.

The display jitters / slow, sluggish response or the program aborts.

This may be due to a memory space problem. The navigation software requires approximately 10-15 MB free main memory space (for swap-out files, etc.). If this is no longer available, the stated problems may arise. The Pocket PC may also go into energy-saving mode, which can lead to the memory card no longer being correctly recognised.

Solution:

- Close down all programs.
- Delete unnecessary files (MP3, PDF etc.) or save them externally.
- Start the navigation program again.
- Carry out a soft-reset (page 27).

## **ADDITIONAL SUPPORT**

If the suggestions in the above section have not solved your problem, please contact our customer service hotline. However, before you contact your Technology Center, please have the following information available:

However, before you contact your Technology Center, please have the following information available:

- How is your computer configured?
- What additional peripherals do you use?
- What messages, if any, appear on your screen?
- What software were you using when the error occurred?
- What steps have you already undertaken to solve the problem?
- Have you upgraded or removed drivers or hardware?
- Can you manually repeat the problem?
- If you have been given a customer number previously, please give this number to the technician.

## WARRANTY

The receipt serves as proof of first purchase and should be kept in a safe place. Your legal rights **are not limited** by these warranty conditions. It is required should you need to make use of the guarantee.

We guarantee that this equipment is in perfect working order. Upon production of the receipt, the remaining period of guarantee shall pass on from the original parts to the respective replacement parts. If you hand in this equipment to make use of the guarantee, you must remove all programs, data and removable storage media. Products which are sent without accessories will be replaced without accessories. The warranty obligation does not apply in the case of the problem being caused by an accident, a catastrophe, vandalism, misuse, incorrect use, ignoring the safety and maintenance regulations, changes by software, viruses or another piece of equipment or accessories or by other modifications not approved by ourselves. This limited guarantee declaration replaces all other guarantees of express or implied nature. This includes the guarantee of saleability or the suitability for a certain purpose but is not limited to this. In some countries the exclusion of implied guarantees is not permissible upon principle. In this case the validity of all express and implied guarantees is limited to the guarantee period. Once this period has expired, all guarantees become invalid. In some countries limiting the period of validity for implied guarantees is not permitted, so that the above limitation does not come into force. If you have any questions with regard to these guarantee conditions, please contact us.

## **LIABILITY LIMITATIONS**

The contents of this manual are subject to unannounced changes caused by technical progress. Manufacturer and sales shall not be responsible for any damages which have been caused as a result of omissions or errors in the information provided in this manual.

Under no circumstances shall we be liable for any of the following:

1. Claims made against you by third parties based on loss or damage.
2. Loss or damage to your blanks, recordings or data.
3. Economic follow-on damage (including lost profit or savings) or associated damage even in the case that we have been informed of the possibilities of this type of damage.

In some countries the exclusion or limitation of accompanying or follow-on damage is not legally accepted so that the above limitations do not come into force.

## **COPYING THIS MANUAL**

This document contains legally protected information. All rights reserved. Copying in mechanical, electronic and any other form without the written approval of the manufacturer is prohibited.

Copyright © 2004, All rights reserved. Microsoft®, MS-DOS®, and Windows are registered trademarks of Microsoft Corporation in the U.S. and other countries. Pentium® is a registered trademark of Intel Corporation. The names of actual companies and products mentioned herein may be the trademarks of their respective owners. Information in this document is subject to change without notice.



# END USER LICENSE AGREEMENT FOR MICROSOFT® SOFTWARE (EULA)

## EULA Regulations

- You have acquired a device ("DEVICE") that includes software licensed by MEDION from Microsoft Licensing Inc. or its affiliates ("MS"). Those installed software products of MS origin, as well as associated media, printed materials, and "online" or electronic documentation ("SOFTWARE") are protected by international intellectual property laws and treaties. The SOFTWARE is licensed, not sold. All rights reserved. SOFTWARE includes software already installed on the DEVICE ("DEVICE Software") and MS software contained on the CD-ROM disk ("Companion CD").
- IF YOU DO NOT AGREE TO THIS END USER LICENSE AGREEMENT ("EULA"), DO NOT USE THE DEVICE OR COPY THE SOFTWARE. INSTEAD, PROMPTLY CONTACT MEDION FOR INSTRUCTIONS ON RETURN OF THE UNUSED DEVICE(S) FOR A REFUND. ANY USE OF THE SOFTWARE, INCLUDING BUT NOT LIMITED TO USE ON THE DEVICE, WILL CONSTITUTE YOUR AGREEMENT TO THIS EULA (OR RATIFICATION OF ANY PREVIOUS CONSENT).

**GRANT OF SOFTWARE LICENSE.** This EULA grants you the following license:

- **DEVICE Software.** You may use the DEVICE Software as installed on the DEVICE.
- **COMPANION CD.** A Companion CD is included with your DEVICE, and you may install and use the Microsoft® ActiveSync® 3.7 component on one (1) or more computers to exchange information with one (1) or more computing devices that contain a compatible version of the Microsoft® Pocket PC Software 2002 operating system. For other software component(s) contained on the Companion CD, you may install and use such components only in accordance with the terms of the printed or online end user license agreement(s) provided with such component(s). In the absence of an end user license agreement for particular component(s) of the Companion CD, you may install and use only one (1) copy of such component(s) on the DEVICE or a single computer with which you use the DEVICE.
- **Microsoft® Outlook® 2002.** If Microsoft Outlook 2002 is included with your DEVICE, the following terms apply to your use of Microsoft Outlook 2002: (i) regardless of the information contained in the "Software Installation and Use" section of the online EULA you may install one (1) copy of Microsoft Outlook 2002 on one (1) computer to use, exchange data, share data, access and interact with the DEVICE, and (ii) the EULA for Microsoft Outlook 2002 is between MEDION and the end user – not between the PC manufacturer and end user.
- **Security Updates/Digital Rights Management.** Content providers are using the digital rights management technology contained in this SOFTWARE ("DRM") to protect the integrity of their content ("Secure Content") so that their intellectual property, including copyright, in such content is not misappropriated. Portions of this SOFTWARE and third party applications such as media players use DRM to play Secure Content ("DRM Software"). If the DRM SOFTWARE's security has been compromised, owners of Secure Content ("Secure Content Owners") may request that MS revoke the DRM SOFTWARE's right to copy, display and/or play Secure Content. Revocation does not alter the DRM SOFTWARE's ability to play unprotected content. A list of revoked DRM SOFTWARE is sent to your computer whenever you download a license for Secure Content from the Internet. You therefore agree that MS may, in conjunction with such license, also download revocation lists onto your computer on behalf of Secure Content Owners. MS will not retrieve any personally identifiable information, or any other information, from your computer by downloading such revocation lists. Secure Content Owners may also require you to upgrade some of the DRM components in this SOFTWARE ("DRM Upgrades") before accessing their content. When you attempt to play such content, MS DRM SOFTWARE will notify you that a DRM Upgrade is required and then ask for your consent before the DRM Upgrade is downloaded. Third party DRM Software

may do the same. If you decline the upgrade, you will not be able to access content that requires the DRM Upgrade; however, you will still be able to access unprotected content and Secure Content that does not require the upgrade.

## DESCRIPTION OF OTHER RIGHTS AND LIMITATIONS.

- **Speech/Handwriting Recognition.** If the SOFTWARE includes speech and/or handwriting recognition component(s), you should understand that speech and handwriting recognition are inherently statistical processes and that errors can occur in the component's recognition of your handwriting, and the final conversion into text. Neither MEDION nor its suppliers shall be liable for any damages arising out of errors in the speech and handwriting recognition process.
- **Limitations on Reverse Engineering, Decompilation and Disassembly.** You may not reverse engineer, decompile, or disassemble the SOFTWARE, except and only to the extent that such activity is expressly permitted by applicable law notwithstanding this limitation.
- **Single DEVICE.** The DEVICE Software is licensed with the DEVICE as a single integrated product. The DEVICE Software installed in read only memory ("ROM") of the DEVICE may only be used as part of the DEVICE.
- **Single EULA.** The package for the DEVICE may contain multiple versions of this EULA, such as multiple translations and/or multiple media versions (e.g., in the user documentation and in the software). Even if you receive multiple versions of the EULA, you are licensed to use only one (1) copy of the DEVICE Software.
- **NO RENTAL.** Except if specifically authorized by MEDION for leased hardware, you may not rent, lease, or lend the SOFTWARE.

### APPROVED ADDITIONAL TEXT IF THE DEVICE IS LEASED:

**LEASED HARDWARE.** In the event that you receive the DEVICE under the terms of a lease from MEDION or MEDION's third-party representative, the following additional terms shall apply: (i) you may not transfer the SOFTWARE to another user as part of the transfer of the DEVICE, whether or not a permanent transfer of the SOFTWARE with the DEVICE is otherwise allowed in this EULA; (ii) your rights with respect to any SOFTWARE upgrades shall be as determined by the lease you signed for the DEVICE; and (iii) you may not use the SOFTWARE after your lease terminates, unless you purchase the DEVICE from MEDION .]

- **Software Transfer.** You may permanently transfer all of your rights under this EULA only as part of a sale or transfer of the DEVICE, provided you retain no copies, you transfer all of the SOFTWARE (including all component parts, the media and printed materials, any upgrades, this EULA and, if applicable, the Certificate(s) of Authenticity), and the recipient agrees to the terms of this EULA. If the SOFTWARE is an upgrade, any transfer must include all prior versions of the SOFTWARE.
- **Termination.** Without prejudice to any other rights, MEDION or MS may terminate this EULA if you fail to comply with the terms and conditions of this EULA. In such event, you must destroy all copies of the SOFTWARE and all of its component parts.

### UPGRADES AND RECOVERY MEDIA.

- **DEVICE Software.** If the DEVICE Software is provided by MEDION separate from the DEVICE on media such as a ROM chip, CD ROM disk(s) or via web download or other means, and is labeled "For Upgrade Purposes Only" you may install one (1) copy of such DEVICE Software onto the DEVICE as a replacement copy for the existing DEVICE Software, and use it in accordance with this EULA.
- **COMPANION CD.** If any software component(s) is provided by MEDION separate from the DEVICE on CD ROM disk(s) or via web download or other means, and labeled "For Upgrade Purposes Only", you may (i) install and use one (1) copy of such component(s) on the computer(s) you use to exchange data with the DEVICE as a replacement copy for the existing Companion CD component(s).

**COPYRIGHT.**

All title and intellectual property rights in and to the SOFTWARE (including but not limited to any images, photographs, animations, video, audio, music, text and "applets," incorporated into the SOFTWARE), the accompanying printed materials, and any copies of the SOFTWARE, are owned by MS or its suppliers (including Microsoft Corporation). You may not copy the printed materials accompanying the SOFTWARE. All title and intellectual property rights in and to the content which may be accessed through use of the SOFTWARE is the property of the respective content owner and may be protected by applicable copyright or other intellectual property laws and treaties. This EULA grants you no rights to use such content. All rights not specifically granted under this EULA are reserved by MS and its suppliers (including Microsoft Corporation).

**EXPORT RESTRICTIONS.**

You acknowledge that SOFTWARE is subject to U.S. export jurisdiction. You agree to comply with all applicable international and national laws that apply to the SOFTWARE, including the U.S. Export Administration Regulations, as well as end-user, end-use and destination restrictions issued by U.S. and other governments. For additional information, see

**<http://www.microsoft.com/exporting/>.**

**PRODUCT SUPPORT.**

Product support for the SOFTWARE is not provided by MS, its parent corporation, Microsoft Corporation, or their affiliates or subsidiaries. For product support, please refer to MEDION support number provided in the documentation for the DEVICE. Should you have any questions concerning this EULA, or if you desire to contact MEDION for any other reason, please refer to the address provided in the documentation for the DEVICE.

**NO LIABILITY FOR CERTAIN DAMAGES.**

EXCEPT AS PROHIBITED BY LAW, MS SHALL HAVE NO LIABILITY FOR ANY INDIRECT, SPECIAL, CONSEQUENTIAL OR INCIDENTAL DAMAGES ARISING FROM OR IN CONNECTION WITH THE USE OR PERFORMANCE OF THE SOFTWARE. THIS LIMITATION SHALL APPLY EVEN IF ANY REMEDY FAILS OF ITS ESSENTIAL PURPOSE.

**FOR APPLICABLE LIMITED WARRANTIES AND SPECIAL PROVISIONS PERTAINING TO YOUR PARTICULAR JURISDICTION, PLEASE REFER TO YOUR WARRANTY BOOKLET INCLUDED WITH THIS PACKAGE OR PROVIDED WITH THE SOFTWARE PRINTED MATERIALS.**



# INDEX

---

---

## A

ActiveSync® -Connector .....	12
Aerial Orientation .....	37
Ambient temperature .....	2
Audience .....	6

---

## B

Back Components.....	11
Battery Charge Indicator .....	11
Bottom Components .....	12

---

## C

Cabling .....	3
Card reader .....	26
Care of the Display .....	5
Charge Battery.....	17
Charge the Battery of the Pocket PC.....	17
Cleaners.....	4
Connecting Pocket PC and GPS-Receiver.....	38
Connecting Pocket PC in the car.....	38
Connecting to the computer ....	23
Connector Power connector on Pocket PC.....	15
Contents of the Navigation CD	32
Copyright .....	46
Customer Service .....	41

---

## D

Data exchange .....	26
Data Security .....	2
Defragmentation .....	41

---

## E

EMC.....	3
----------	---

---

## F

FAQ.....	39
Faults and Possible Causes .....	42
First-Aid.....	41

---

## G

Getting Started.....	9
GPS.....	31
GPS (Global Positioning System)	31
GPS antenna .....	11

---

## H

Hard-Reset.....	27
Headphone.....	13
Hotline .....	44

---

## I

Initial Set-up of the Pocket PC	16
Installing Microsoft® ActiveSync® .....	22
Installing Microsoft® Outlook ..	21
Installing the Software.....	20
Introduction .....	6
IR Port.....	14

---

## L

Lanyard eyelet.....	13
Left Components.....	13

---

## M

Maintenance.....	4
Malfunction .....	41
Memory Card Quick Installation.....	32
Microphone .....	10
Mounting the Navigation Set in a Car .....	36

Mounting the Navigation Set on a Bicycle .....	35
---	----

## **N**

Navigation .....	29
Safety instructions.....	29
Tips.....	29
Navigationpad .....	10

## **O**

Operating Environment .....	2
-----------------------------	---

## **P**

Power .....	3
Connector on Pocket PC .....	15
Power supply .....	3
PPC Connector .....	15

## **Q**

Quality .....	6
---------------	---

## **R**

Reset .....	13
Reset Button.....	13
Resetting the Pocket PC .....	27

## **S**

Safety and Maintenance .....	1
Safety Instructions	
Cabling .....	3
Connection .....	3
Power supply .....	3
Power .....	3
Battery Operation.....	4

Scandisk .....	41
SD/MMC Slot .....	14
Soft-Reset.....	27
Software Installation .....	34
Starting Navigation .....	38
Storage .....	42
Stylus.....	14
Supplied Items .....	7
Synchronization between Pocket PC and PC.....	24
System performance .....	41

## **T**

Text recognition.....	42
Top Components.....	14
Touch Screen .....	10
Transport.....	5

## **U**

Upgrading/Retrofitting .....	2
USB-Docking Station .....	15
Using the Pocket PC .....	23

## **V**

Views .....	10
Back components.....	11
Bottom components .....	12
Front components .....	10
Left components .....	13
Top components .....	14

## **W**

Warranty .....	45
Working with Memory Cards...	25